

# QUARTZ LATHE BURNER

.....Machine Mounting.....

**GROUP L-1 Square Matrix.**

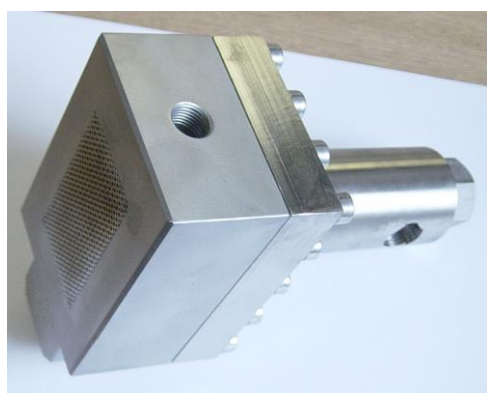
Range: SMPMC.

Surface or Partial Pre - Mix.

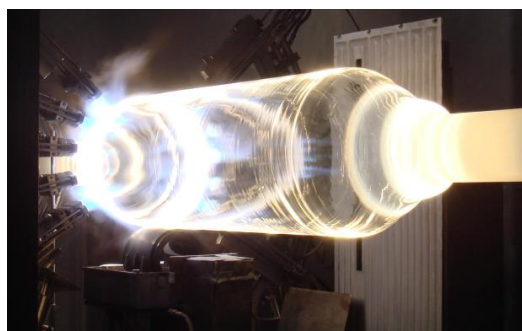
Hydrogen, Natural Gas, LNG and Propane gas  
at 1 - 7 bar supply pressure.  
Oxygen at 4 - 12 bar supply pressure.  
Water at 2 - 4 bar supply pressure.

**FOR HIGH PURITY QUARTZ PROCESSING.  
QUARTZ TUBE RE-SIZING.....WELDING.....POLISHING.**

Constructed from Heat Resisting Nickel Alloy and water-cooled  
for zero contamination when operated with the Rapidflame CFOM  
Control System and water cooled burner stand.



Cat. No.	Type.	kW. (nominal)	A.
L301	PMC-9	40	21.30
L302	PMC-10	50	23.70
L303	PMC-11	60	26.07
L304	PMC-14	150	33.18
L305	PMC-15	200	35.55
L306	PMC-15	250	35.55
L307	PMC-15x25	250+	35.55 x 59.5

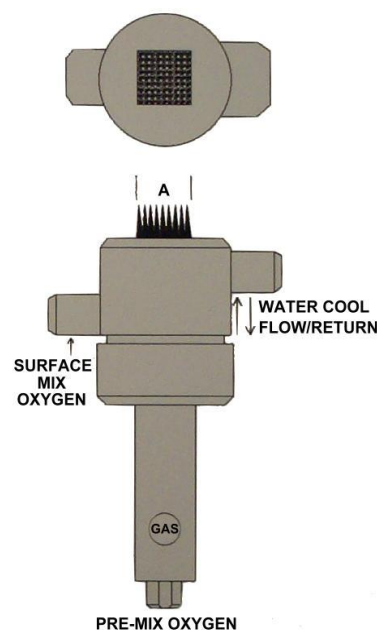


Burner Overall Length = 160mm  
Maximum width 15x15 = 112mm  
Maximum width 15x25= 160mm

## Standard Supply Thread Connections

GAS: 3/8" BSP. Taper form.  
OXYGEN: 1/8" BSP. Taper form (surface mix entry)  
OXYGEN: 3/8" BSP. Taper form (pre-mix entry)  
WATER: 1/8" BSP. Taper form. (flow and return)  
Water Flow Rate: 5 - 15 litres per min.

Special assemblies with welded connection tubes  
and ferruled compression fittings can be supplied to order.  
Rapidflame also offer a refurbishment service for contaminated burners.



The Rapidflame policy is one of continuous development and improvement, we therefore reserve the right to change any specification or design without prior notice.



Brian Royd Mills, Saddleworth Road, Greetland, Halifax,  
West Yorkshire, HX4 8NF, United Kingdom  
Telephone Sales: (0)1422 311244 Facsimile: (0)1422 311248  
e-mail: [sales@rapidflame.com](mailto:sales@rapidflame.com) URL: [www.rapidflame.com](http://www.rapidflame.com)